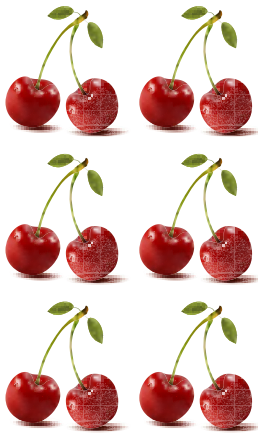


Understanding multiplication

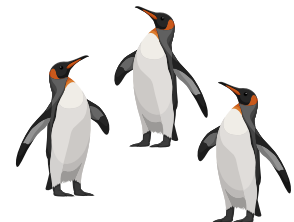
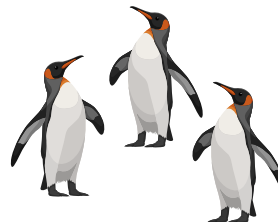
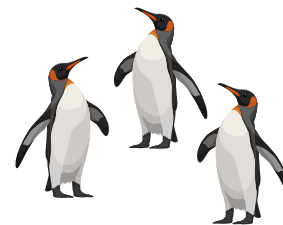
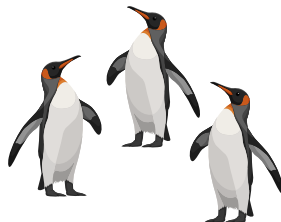
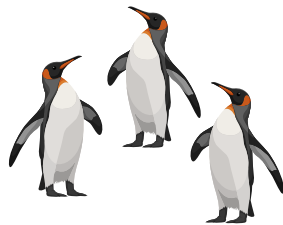
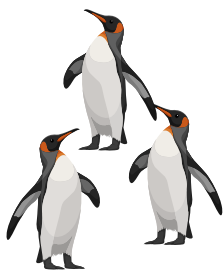
○ Circle the group of objects that matches the equation.

$$6 \times 2 = 12$$



How many cherries are there in that group?

$$2 \times 3 = 6$$



How many penguins are there in that group?

Multiplication

○ Fill in the blank.

1 $3 \times 3 =$ _____

2 $3 \times 4 =$ _____

3 $4 \times 5 =$ _____

4 $8 \times 3 =$ _____

5 $1 \times 4 =$ _____

6 $2 \times 4 =$ _____

7 $9 \times 5 =$ _____

8 $1 \times 3 =$ _____

9 $7 \times 3 =$ _____

10 $5 \times 3 =$ _____

11 $4 \times 2 =$ _____

12 $8 \times 5 =$ _____

13 $2 \times 2 =$ _____

14 $3 \times 5 =$ _____

15 $5 \times 4 =$ _____

16 $7 \times 4 =$ _____

Understanding division

○ Divide the food between the kids. Circle the correct equation.



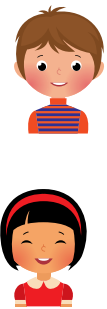
$5 \times 2 =$

$12 \div 4 =$

$8 \div 4 =$

$8 - 4 =$

How many bananas does each kid get?



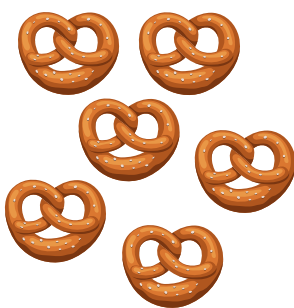
$3 \times 3 =$

$6 \div 2 =$

$3 + 3 =$

$6 \times 10 =$

How many muffins does each kid get?



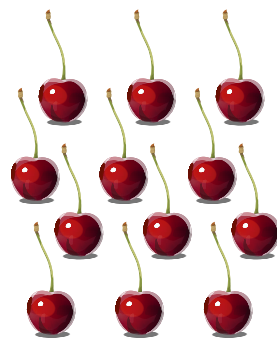
$6 \div 2 =$

$6 \div 3 =$

$6 \div 4 =$

$6 \div 6 =$

How many pretzels does each kid get?



$3 \times 4 =$

$12 \div 2 =$

$12 \div 4 =$

$12 - 4 =$

How many cherries does each kid get?

Division (1-10)

○ Find the quotient.

1

$12 \div 4 = \square$

2

$6 \div 6 = \square$

3

$49 \div 7 = \square$

4

$16 \div 5 = \square$

5

$18 \div 6 = \square$

6

$48 \div 6 = \square$

7

$42 \div 7 = \square$

8

$1 \div 1 = \square$

9

$35 \div 7 = \square$

10

$28 \div 7 = \square$

11

$7 \div 1 = \square$

12

$40 \div 10 = \square$

13

$42 \div 6 = \square$

14

$72 \div 9 = \square$

15

$50 \div 10 = \square$

16

$12 \div 2 = \square$

17

$18 \div 3 = \square$

18

$5 \div 1 = \square$

19

$2 \div 2 = \square$

20

$72 \div 8 = \square$

21

$25 \div 5 = \square$

22

$18 \div 2 = \square$

23

$54 \div 9 = \square$

24

$20 \div 10 = \square$