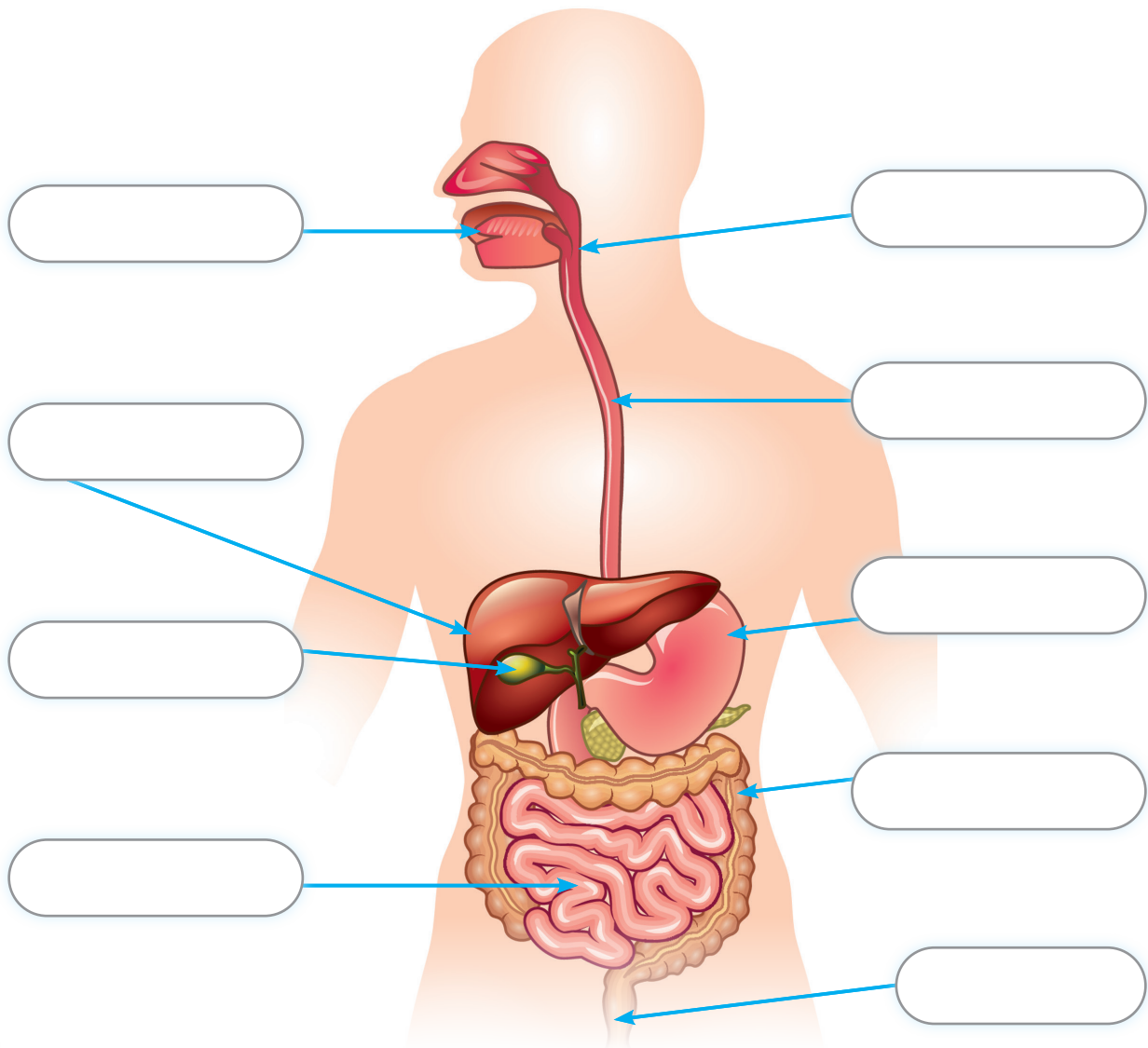


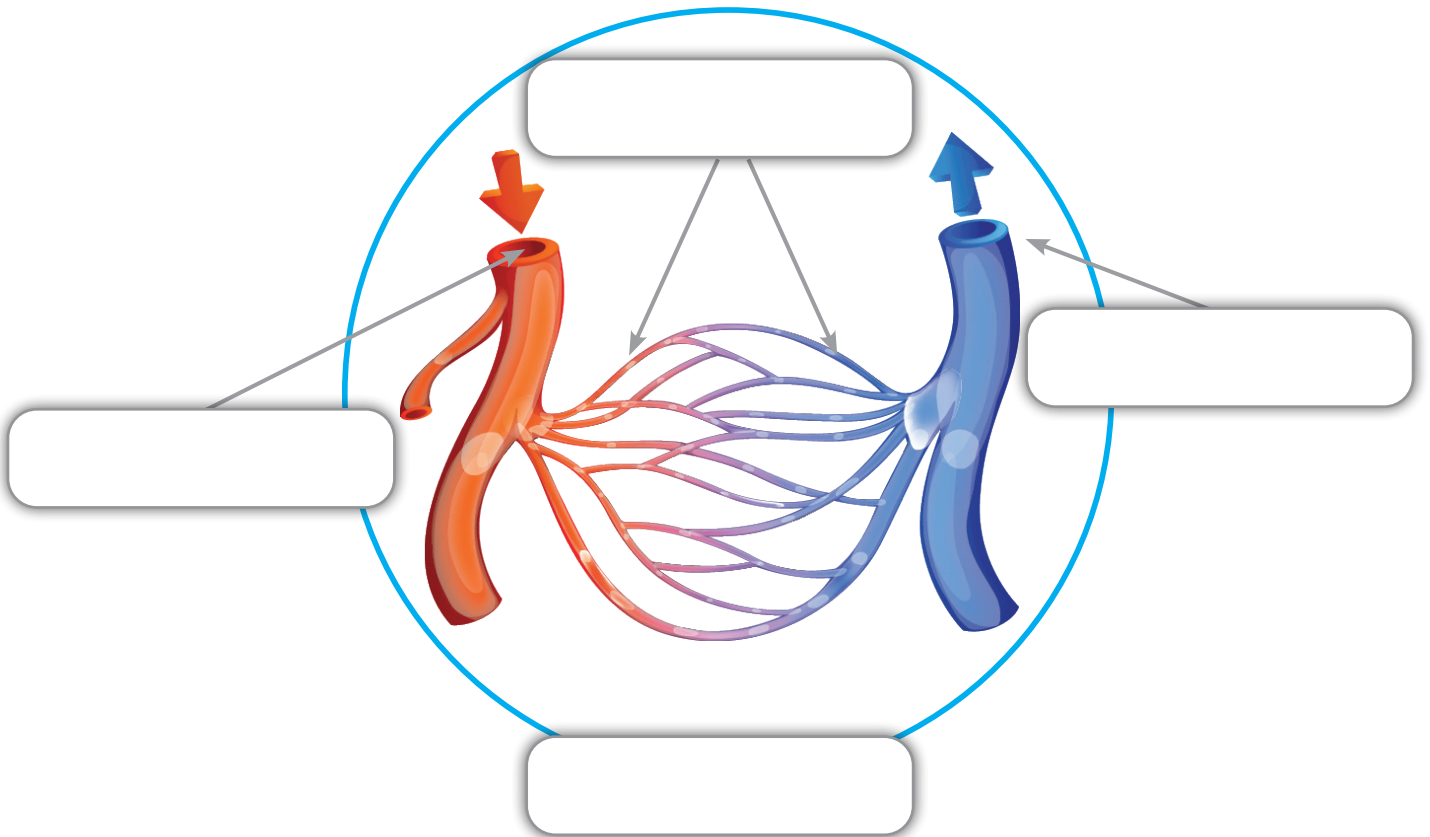
# The digestive system

Label the parts of the digestive.



# The circulatory system

1- Label the parts of the circulatory system.



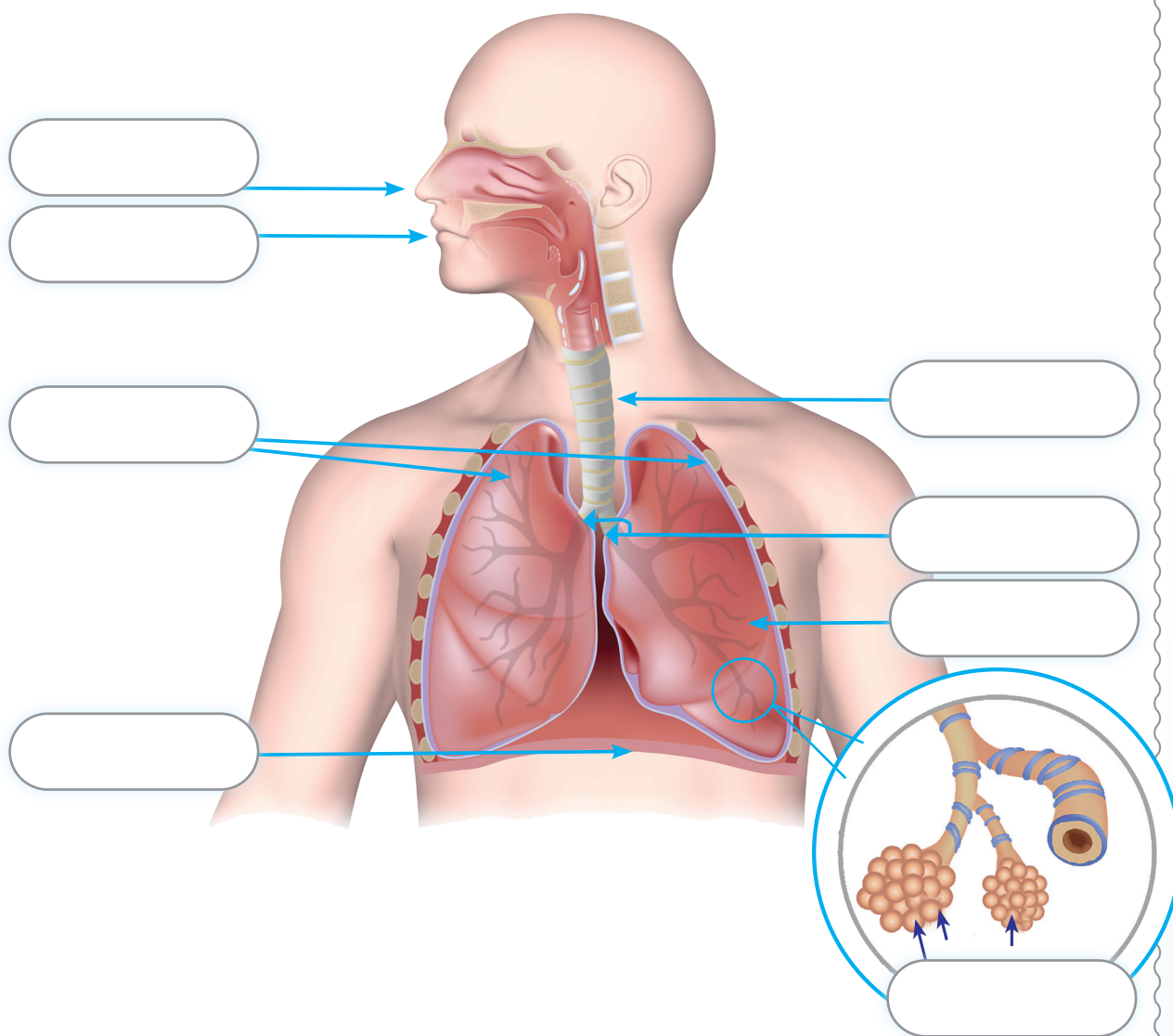
2 What is the organ that pumps the blood to the different parts of the body? .....

3 What is the difference between an artery and a vein?

.....  
.....

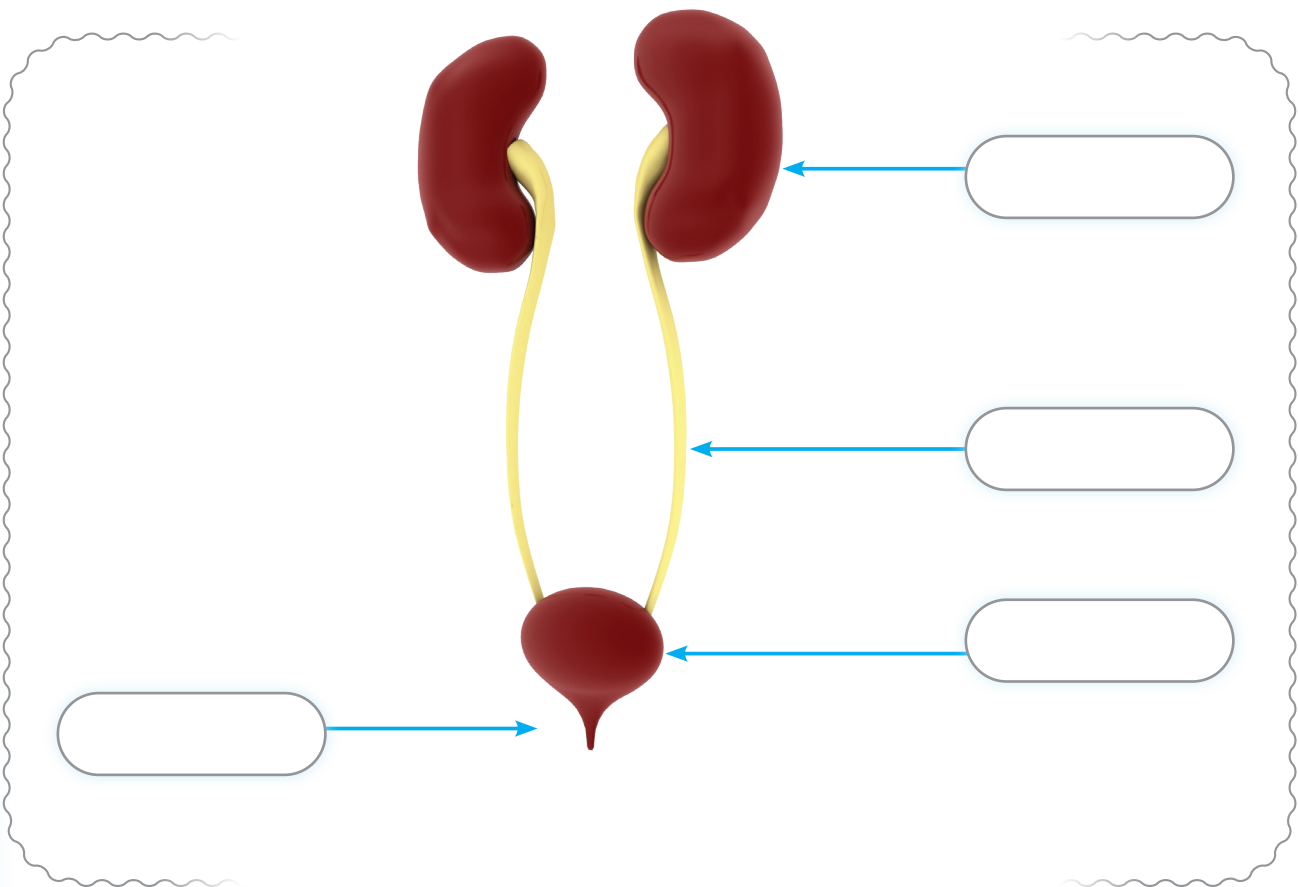
# The respiratory system

Label the diagram



# The urinary system

## 1- Label the diagram



2

What organ removes waste from blood?

.....