

1

The electric force between objects that are not in motion are called

a- Series electricity

b- Electric current

☒ c- Static electricity

d- Electric force

2

When an object gains electrons, it acquires

a- A positive charge

☒ b- A negative charge

c- No charge

d- It stays the same

3

A poor electrical conductor that is used to coat wires is called.

a- A coating

b- A conductor

c- No charge

☒ d- An insulator

4

The two ends of a magnet are called

☒ a- Poles

b- Electrodes

c- Fields

d- Protons

5

Which of the following is used to interrupt the flow of a current?

☒ a- A switch

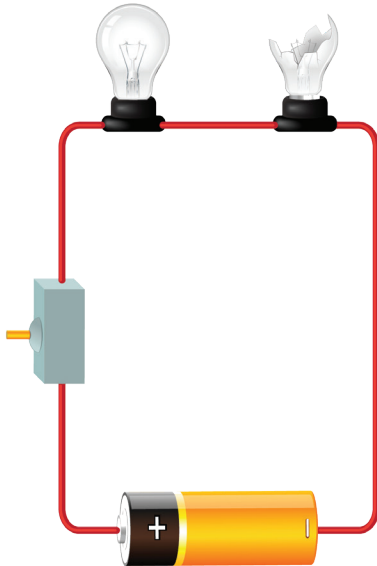
b- An electric motor

c- A wire

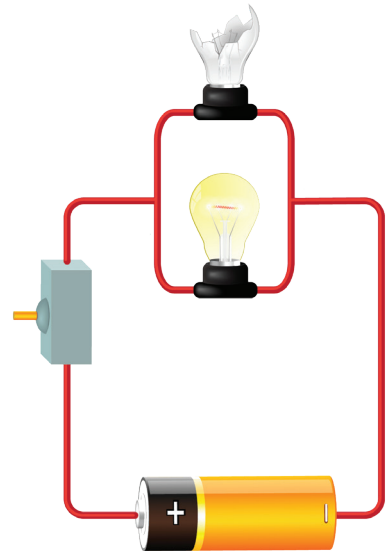
d- Iron filings

Answers

1



..Series circuit...



..Parallel circuit..

2

Name the components of a circuit.

..Battery, wire, switch, light bulb..

3

What is the purpose of a battery in a circuit?

..A battery provides the circuit with a source of energy.....

4

Draw the symbols of a switch, bulb and battery.



Battery



Switch

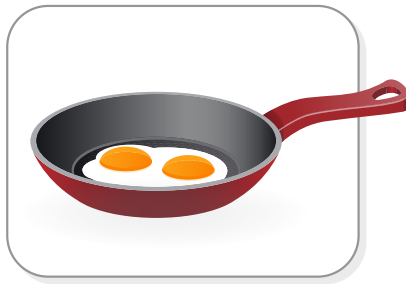


Bulb

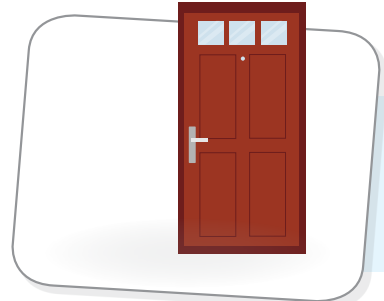
Answers



.....insulator.....



.....conductor.....



.....conductor.....



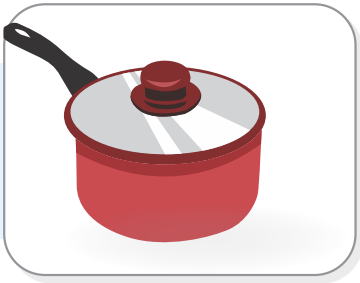
.....conductor.....



.....conductor.....



.....conductor.....



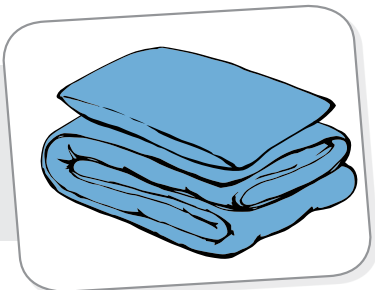
.....conductor.....



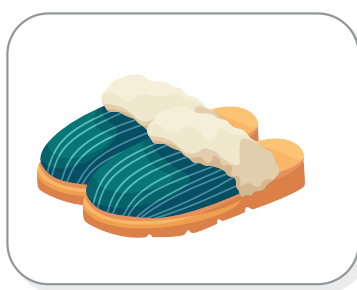
.....conductor.....



.....conductor.....



.....conductor.....



.....conductor.....



.....conductor.....